



Meet the Team



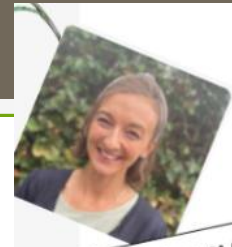
Welcome to Willow Class and Cherry Class

2024-25



Willow Class Team

Mrs Rolland
Willow Class Teacher



Mrs Bilthouse and Mrs
Crofts
Learning Support Assistants

Hello I am Mrs Rolland, Willow Class' teacher.
Mrs Bilthouse and Mrs Crofts are our Teaching
Assistants.



Mrs Harder and Mrs Swann will be teaching in our
class on Wednesdays during my Planning
Preparation and Assessment time.

Mr Green is our Sports Coach and teaches us PE
every Wednesday.



We are all really looking forward to working with
you and your children this year.





Mrs Chandler
Cherry Class Teacher



Miss Price
Cherry Class Teacher



Cherry Class Team

Hello I am Mrs Chandler, Cherry Class' teacher from Tuesday to Friday. **Miss Price** will be teaching us every Monday.

Mrs Simpson is our Teaching Assistant.

Mrs Harder and Mrs Swann will be teaching in our class on Thursdays during my Planning Preparation and Assessment time.



Mr Green is our Sports Coach and teaches us PE every Wednesday.



We are all really looking forward to working with you and your children this year.

Whole School Behaviour



Loxwood Learners Code:

- We are kind, helpful and polite.
- We work hard and try our best.
- We listen to others and respond kindly.
- We look after each other and our environment.
 - We are a good friend.



How do we encourage positive choices?

- Children will be awarded house points for demonstrating our school values.
- We collect marbles to earn our 'Golden Time' on a Friday. These are awarded for **all children** working as a team such as everyone helping to tidy up, sitting or lining up quietly or walking sensibly through the school. We use our maths skills to count the marbles and work out how many we still need to earn.





Your child needs...



A named water bottle every day please that is extra to the one in their lunch box.

Named Wellies (we will be going on walks around the school grounds throughout the year and they are used for Woodland Learning).

A weather appropriate named coat every day.

All clothing to be named, especially jumpers and cardigans!



Full & named P.E Kit. Trainers are allowed and are often more supportive than plimsolls but please only send in laced ones if they can do them up themselves!





Cherry Class Expectations

- The children will be introduced to the KS1 curriculum in the Autumn Term and should be fully emersed by the start of the Spring Term.
- They will continue to learn through continuous provision and play-based learning in the classroom and in our outside area.
- The children will be encouraged to become more independent, for example, getting themselves dressed and undressed for PE and selecting their tools for learning.

A decorative illustration of two willow branches with yellow catkins, positioned in the top left corner of the slide.

Willow Class Expectations

- The children will be encouraged to become increasingly independent and organised as the year goes on, to enable them to be ready to progress to KS2 by the end of the year.
- The children will continue to learn in different ways and will be given some choice in their learning and in how they challenge themselves.
- There will still be lots of continuous provision available to the children and plenty of play-based learning both inside and outside the classroom.



Learning at school

Each class will base their learning around a topic. Learning will be both inside and outside of the classroom and will happen in groups, pairs and individually. Learning will be both teacher directed and child lead. Some learning will be recorded in books, but sometimes through pupil voice and a photo being taken.





Home Learning

- **Reading** - Most children will be bringing home a RWInc book in their reading folders, which will be changed by your child's reading teacher once they have read the book three times in school. Some Year 2 Children will be choosing their own book from the classroom.



Phonics and spellings lists are on our Class Pages for you to work through at your own pace.

- **Home learning Grid tasks** can be uploaded to Tapestry or sent in to share in class in person. We will look at these as soon as possible in class and award house points.



Castles in the Sky
Autumn Term Home Learning Projects Year 1

Please complete 2 of these projects each half term so that by the Christmas holidays you will have completed at least 4 of the activities below. These activities are designed to get your creative juices flowing and to be a great opportunity to develop your learning with support from someone at home. We are really looking forward to sharing what you have learnt and the new skills you have developed. When you have some Home Learning to share, you could bring it in to show or upload a photo and/or video to Tapestry.

<p>Counting to 10, 20, 50 or 100</p> <p>Practice counting at home, on the way to school, in the car, at the supermarket, whenever you like!</p> <p>Why not demonstrate your skills by recording yourself, taking a photo or drawing a picture.</p> <p>Castle Model</p> <p>Make a model of a castle (real or fairy tale) and practice your cutting and drawing skills.</p> <p>Maybe you could tell us about who lives in your castle, you could even write a story about them!</p>	<p>Wonderful Writing</p> <p>Write a sentence or two (maybe a short story) about anything you like, a pet, a castle, Star Wars, whatever inspires you to get writing!</p> <p>You could bring your story in to read or upload it to Tapestry to share with the class.</p> <p>Visit a Castle or Castle</p> <p>Visit a castle with your family or go on a virtual tour using the internet!</p> <p>Perhaps you could make a map or a guidebook based on your visit or share some photos with us!</p>	<p>Autumn Walk</p> <p>Go on a walk with your family and take a photo of some of the signs of Autumn that you find.</p> <p>It might inspire you to draw or paint an Autumn picture!</p> <p>Materials Collage</p> <p>We are investigating materials in Science! Make a collage using materials that you find. Perhaps take it to our learning about Castles or Bridges? You could label the materials that you use or try to make a collage using only one type e.g. just shiny materials.</p>
---	---	--

Or get creative and make us with some of your own choice 'open-ended' learning!

Don't forget to read as often as possible at home and practice reading and spelling the Year 1 Common Exception words.

Autumn Term 2020 Home Learning Projects Year 2

On your marks... **get set, go!** **Search for the stars!**

These activities are designed to get your creative juices flowing and to be a great opportunity to develop your learning with support from someone at home. You should aim to complete two each half term. We are really looking forward to sharing what you have learnt and the new skills you have developed.

Either share your learning on Tapestry or bring into class. **House points will be awarded!**

<p>Counting in 2s, 5s, 10s or even 3s or 4s</p> <p>Practice counting in 2s, 5s, 10s or even 3s or 4s at home, on the way to school, in the car, at the supermarket, whenever you like!</p> <p>Why not demonstrate your skills by recording yourself, taking a photo or writing out your stop counting!</p> <p>On the Move!</p> <p>We are finding out about the history of transport. Research the history of one type of transport. Use your historical skills to ask an older family member about how transport has changed in their lifetime. If you want to find out more you might like to visit Easton's Transport - Antiques Museum Present the facts you find out in any way you like!</p>	<p>Marvelous Map!</p> <p>Geography we will be learning about map making. Can you create your own map? It could be a map of where you live, your house, your bedroom or a favourite place to go such as the local park.</p> <p>Materials Collage</p> <p>We are investigating materials in science. Make a collage using materials that you find. You could label the materials that you use or try to make a collage using only one type e.g. just shiny materials.</p> <p>Transport Tales</p> <p>Go on a journey on foot, in a car, a train, bus, boat or whatever take your fancy! Show us a photo, a drawing or write a report about your journey, using your chronological report writing skills.</p>
--	--



Reading

We recommend that you try to read with your child **five times a week for approximately 10mins**. We appreciate family life is busy, but any time you dedicate to practising reading skills will be beneficial to your child's development. This can also be sharing a book together with you reading to them, as this is a vital part of developing a love of reading and is also vital in helping to increase their vocabulary.

At Home

We would like you to **record your child's reading progress at home in their yellow reading log**. This doesn't need to be every time that they read, but as often as you can. Your comments are so helpful for us, as they enable us to form a picture of what your child can do and what progress they are making. We will check the reading records as often as we can and reply to any queries as soon as possible. Sending it in in your child's hand is often helpful. House points are awarded for reading at home!

At School

We assess the children's reading at school in many ways; group reading, paired reading, whole class reading and sometimes 1:1 reading. We record our assessments in school rather than in the home reading record and will share progress with you in the usual way during Parent Consultation Meetings. If you have any concerns or questions at any time, do feel free to come and have a chat.



Phonics in Year 1 and 2

All children practise their sounds as part of the curriculum.

We follow the Read Write Inc scheme as a school.

Reception, Year 1 and 2 children are put into groups according to the sounds they already know, so children focus on the appropriate sounds for their current need. (These groups are not static and are open to change). We assess their phonics regularly so that we can ensure that all children are in the correct group.

At the end of Year 1 children undertake a Phonic Screen Assessment. This is a national assessment that happens in all schools. It is undertaken with their class teacher and takes about 10 minutes, 1-1 per child. Children are required to segment and blend words and non-words containing the phonemes that they have already been taught in school. This is something that is familiar to the children already. Children in Year 2, who did not achieve the required pass in Year 1, will retake the assessment also.

Phonics



f	l	m	n	r	s	v	z	sh	th	ng
ff	ll	mm	nn	rr	ss	ve	zz			nk
ph	le		kn	wr	se		se			
					c		s			
					ce					

b	c	d	g	h	j	p	qu	t	w	x	y	c
bb	k	dd	gg		g	pp		tt	wh			tch
	ck				ge							

a	e	i	o	u	ay	ee	igh	ow
	ea				a-e	ea	i-e	o-e
					a	e	i	oa
					ai	y	y	o
					aigh			

oo	oo	ar	or	air	ir	ou	oy	ire	ear	ure
u-e			oor	are	ur	ow	oi			
ue			ore		er					
ew			aw							
			au							

Speed Sounds

Spelling



Please focus on **reading and spelling** these Common Exception Words at home at your own pace throughout the year.

Common Exception Words

Year 1

a	his	push	was
are	house	put	we
ask	I	said	were
be	is	says	where
by	love	school	you
come	me	she	your
do	my	so	
friend	no	some	
full	of	the	
go	once	there	
has	one	they	
he	our	to	
here	pull	today	

Year 2

after	class	floor	most	pretty
again	climb	gold	move	prove
any	clothes	grass	Mr	should
bath	cold	great	Mrs	steak
beautiful	could	half	old	sugar
because	door	hold	only	sure
behind	even	hour	parents	told
both	every	improve	pass	water
break	everybody	kind	past	who
busy	eye	last	path	whole
child	fast	many	people	wild
children	father	mind	plant	would
Christmas	find	money	poor	

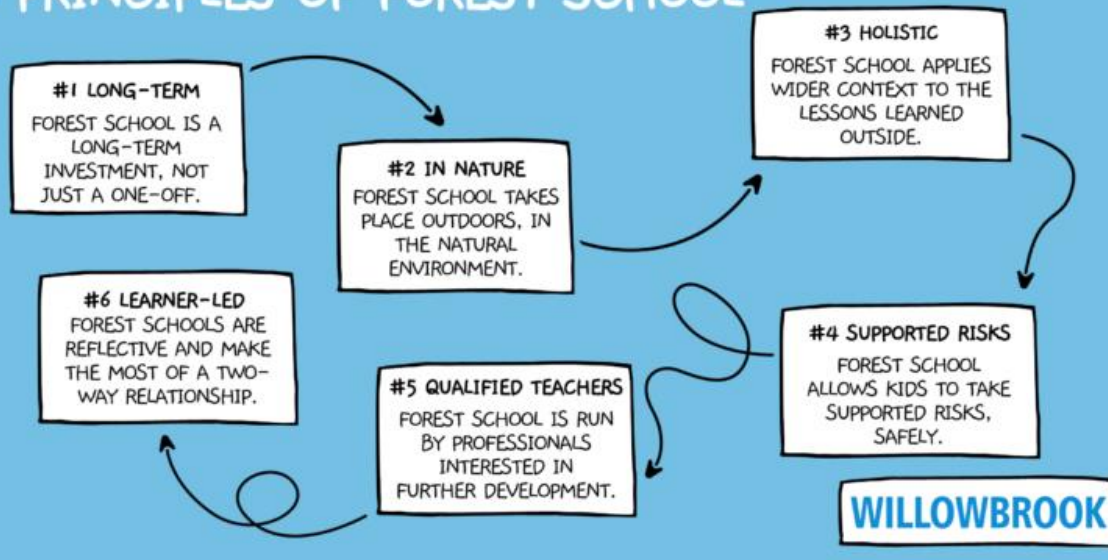


visit [twinkl.com](https://www.twinkl.com)



Woodland Learning

6 PRINCIPLES OF FOREST SCHOOL



Woodlands Learning Kit List

- Jacket/waterproof coat
- Fleece/sweatshirt*
- Waterproof trousers/trousers that can get muddy*
- Spare socks
- Wellies or boots (named)**
- Woolly hat/sunhat (weather dependent)
- Gloves (weather dependent)
- Spare plastic bag for muddy kit

*Shorts and short sleeved shirts are not suitable

Please come to school dressed ready for Woodlands Learning, any extra kit in a named bag.





Woodland Learning Dates

Cherry Class - Autumn Term

Thurs 5/9/24

Thurs 19/9/24

Thurs 3/10/24

Thurs 17/10/24

Thurs 7/11/24

Thurs 21/11/24

Thurs 5/11/24

Thurs 19/11/24

Willow Class - Autumn Term

Weds 11/9/24

Weds 25/9/24

Weds 9/10/24

Weds 23/10/24

Weds 13/11/24

Weds 27/11/24

Weds 11/ 12/24



Keeping Up-to-Date



Remember to check...

- Tapestry
- The school website and the 'Up to the Minute'
- Class Webpage - You will find our Termly Topic Web and other important information.
- Book bags - check for letters and forms to complete



Any questions?

If you have any questions, please ask at school drop off or pick up.

You can also email me us

messages@loxwoodschool.com,

addressing the emails to Mrs Rolland or Mrs Chandler.

